

Team Leaders Meeting

07/10/2021



- Competition Day 2 – 08/10/2021
 - EMTBOC/CX80 WCUP – Middle Distance
 - EJMTBOC – Middle Distance
 - EYMTBOC – Middle Distance
 - WMMTBOC – Middle Distance



EMTBOC & CX80 WCUP – EJMTBOC – EYMTBOC – WMMTBOC 2021

Schedule of the day



- 08.30-16.00: Opening hours of the EO at the Middle distance arena (Alcaravela-Sardoal).
- 09.00: 1st Start for Middle distance course (EYMTBOC, EJMTBOC, EMTBOC & CX80 WCup)
- 09:05: Finish quarantine activated. (EYMTBOC, EJMTBOC, EMTBOC & CX80 WCup)
- 10:30: Start quarantine activated (EYMTBOC, EJMTBOC, EMTBOC & CX80 WCup).
- 10:35: Finish quarantine finished. (EYMTBOC, EJMTBOC, EMTBOC & CX80 WCup)
- 12:30: Prize giving ceremony at finish area of Middle distance (EYMTBOC, EJMTBOC, EMTBOC & CX80 WCup)
- 13.30: 1st Start for Middle distance course (WMMTBOC)
- 15:00 Deadline start group allocation for Long Distance
- 16:30: Prize giving ceremony at de finish area of Middle Distance (WMMTBOC)
- 16:00-22:00: Opening hours of the EO at the EC
- 18:00 Team Leaders Meeting

Group Form reminder

Early group *(First athletes to Start):*

Organization ID	Name	SPORTident
mandatory		Only if new
mandatory		Only if new

Please use organization ID of the credential, this will facilitate the allocation in the start groups.

Middle group:

Organization ID	Name	SPORTident
mandatory		Only if new
mandatory		Only if new

Late group *(Before the Orange Start Group):*

Organization ID	Name	SPORTident
mandatory		Only if new
mandatory		Only if new

Travel & Logistic



- Distance from EC to the arena in Alcaravela: 17 Km (20 min driving).
- Directions: follow the direction Sardoaal (EN 2 – National road 2). In the EN 2 follow the directions Alcaravela, In village of Santa Clara, there will exist orienteering guiding arrows
- **39.564512, -8.135224**
- **39°33'52.2"N 8°08'06.8"W**
- Parking: In areas marked with signs.
- Distance from parking to start is 1,5 Km.
- Arrivals, in the arena.
- At the Middle distance, competitors' clothes and other personal belongings will be transported by the organiser from the start quarantine to the finish arena. Please pack your things in a plastic bag provided at the start quarantine and mark the bag with your bib/start number.

Quarantine times



- 09:05: Finish quarantine activated. (EYMTBOC, EJMTBOC, EMTBOC & CX80 WCup)
- 10:30: Start quarantine activated (EYMTBOC, EJMTBOC, EMTBOC & CX80 WCup).
- 10:35: Finish quarantine finished. (EYMTBOC, EJMTBOC, EMTBOC & CX80 WCup)

Note to All athletes: We request for fairness reasons don't reveal anything important from the courses or the terrain to the other competitors in the WMMTBOC races (limited common area).

The use of telecommunication devices (mobile phones etc.) inside the quarantine zones is not allowed.

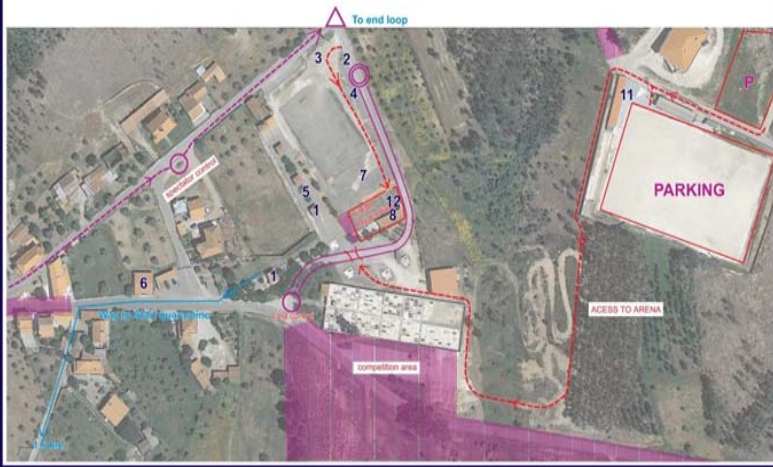
Map of Arena

MIDDLE DISTANCE

FINISH AND START ARENA

08 Oct 21

1. Secretariat
2. Read-out, hand hygiene, mask
3. First aid
4. Speaker
5. Bike Shop
6. Doping control
7. Tent
8. Toilets
9. Start quarantine entrance
10. GPS
11. Showers
12. Washing Bikes



- There is no sale of food and drinks at the arena
- There is catering service with daily menu (The meals must be booked 1 week in advance) – Delivery at Arena
- There are toilets in the quarantines (finish and start) and in the arena.
- There is water available in quarantines, in warm up area and in arena..

Course Details



- **Start procedures:**
- **Start:** SI-clear is found outside start boxes. There are 3 start boxes. Which you enter 3 minutes before time start. In box 1 your SI-number is confirmed by the start staff. In box 2 you have the SI-check. In box 3 you take your map (it is your responsibility to take the correct map). After time start you have to follow a mandatory route to the start point which is marked by a flag in the terrain.
- **Tracking:** Athletes of Red and Orange start groups will be wearing tracking units (GPS).
- **Finish procedures:** Finish SI box will be in the finish line.

Maps



- Map scale: 1:15.000
- Contours: 5 meters
- Map size: 30 x 36 cm

Distance and Winning Times



➤ EMTBOC&CX80 Wcup/EJMTBOC/EYMTBOC

Middle distance				
classes	w.time	length	climb	controls
ME	50-55	19,4	470	23
WE	50-55	16,3	350	20
M20	40-44	14,6	340	18
W20	40-44	12	230	17
M17	32-37	10,2	190	15
W17	32-37	8,5	160	13

➤ WMMTBOC

Middle distance				
classes	w.time	length	climb	controls
M35	50-55	18,5	330	23
W35	50-55	14,5	290	16
M40/M45	50-55	16,8	325	19
W40/W45	50-55	14,5	290	16
M50/M55	50-55	14,8	305	18
W50/W55	50-55	12,2	230	18
M60/M65	50-55	12	230	17
W60/W65	50-55	10,2	190	16
M70/M75	50-55	10,2	190	16
W70/W75	50-55	9,2	160	14
M80/M85	50-55	9,2	160	14

Terrain Description



- Take place in a forest area, with small urban areas; the forest characteristic features are the typical Mediterranean forest, consisting mainly of Eucalyptus plantations, with multiple paths and roads, dense vegetation. The forest areas sometimes have underbrush that can hamper the shortcuts.
- Thorny vegetation can be found. Therefore puncture protection is strongly recommended.
- All the competitions area are open to public traffic. The courses cross several public roads. There will be marshal's at the most critical places to help safe crossing and minimize disruption. Riders should follow the instruction of marshals. Still, it is the riders' responsibility to observe traffic rules and avoid unsafe practices.
- Some dogs could be found, part could be confined by a chain or fences, others can be loose, please be careful and pay attention when crossing them, no experience of problems in the past, however we cannot control that all will be chained and that they will not try to follow you or bark at your passage.

Warnings



- **Due to a cut of trees done today in the terrain, a small area of the vegetation was affected but the classifications of the paths/roads didn't change, only previous vegetation classification (green/white) can't be find in the terrains once the cut transformed the terrain now to an open area (not in the map).**
- **It is allowed in the spectator control to leave bottles or mechanical tools, the team leader can access this area to leave the material, the same should be indentified with team or bib number.**
- On critical road passages there will be marshals present to control the traffic and announce the presence of any possible obstacle or arrival of a car.



MTBO 2021

CX80 MTBO World Cup | WMMTBOC
EMTBOC | EYMTBOC | EJMTBO



MÉDIO TEJO

ABRANTES CONSTÂNCIA CHAMUSCA
6th to 10th October - PORTUGAL

